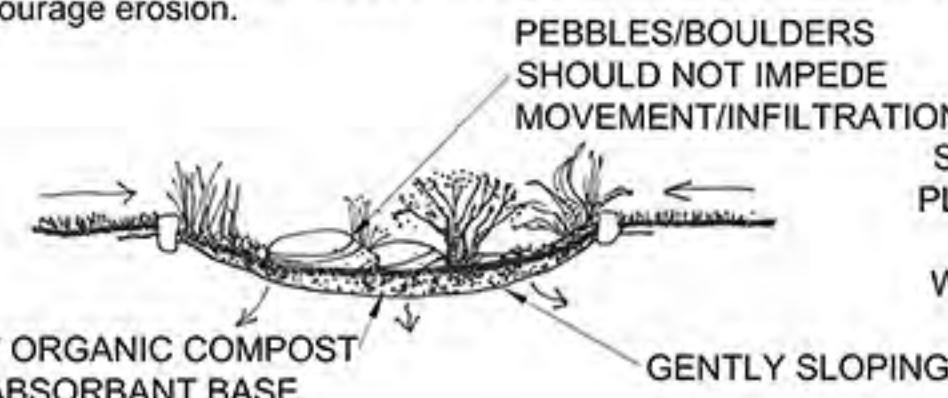


WUCOLS - NORTHPARK - CA Friendly-Native

Type(s)	Botanical Name	Common Name	Water Use	ET %
Tree, California Native, Arboretum All-star	Cercis occidentalis	western redbud	Low	10-30
Perennial, California Native	Carex tumulicola	Berkeley sedge	Low	10-30
Perennial	Calylophus hartwegii	Sierra sundrop	Very Low	< 10
Ground Cover, Shrub, California Native	Baccharis pilularis cvs.	dwarf coyote brush	Low	10-30
Ground Cover, California Native	Artemisia californica "Montara"	Montara sagebrush	Low	10-30
Perennial, California Native	Sphaeralcea spp. (CA native and non-native spp.)	desert/globe mallow	Low	10-30
Shrub, California Native	Arctostaphylos densiflora cvs.	manzanita cvs. e.g. Howard McMinn	Low	10-30
Perennial, California Native	Penstemon SW native spp. and cvs.	penstemon (SW natives)	Low	10-30
Tree, California Native	Lyonothamnus spp.	ironwood	Low	10-30
Perennial, California Native	Juncus patens and cvs.	California grey rush	Low	10-30
Perennial, California Native	Glandularia lilacina and cvs. (Verbena lilacina)	lilac verbena	Low	10-30
Shrub, California Native	Gambelia speciosa & cvs. (Galvezia speciosa & cvs.)	island bush snapdragon	Very Low	< 10
Shrub, California Native	Frangula californica and cvs. (Rhamnus californica)	coffeeberry	Very Low	< 10

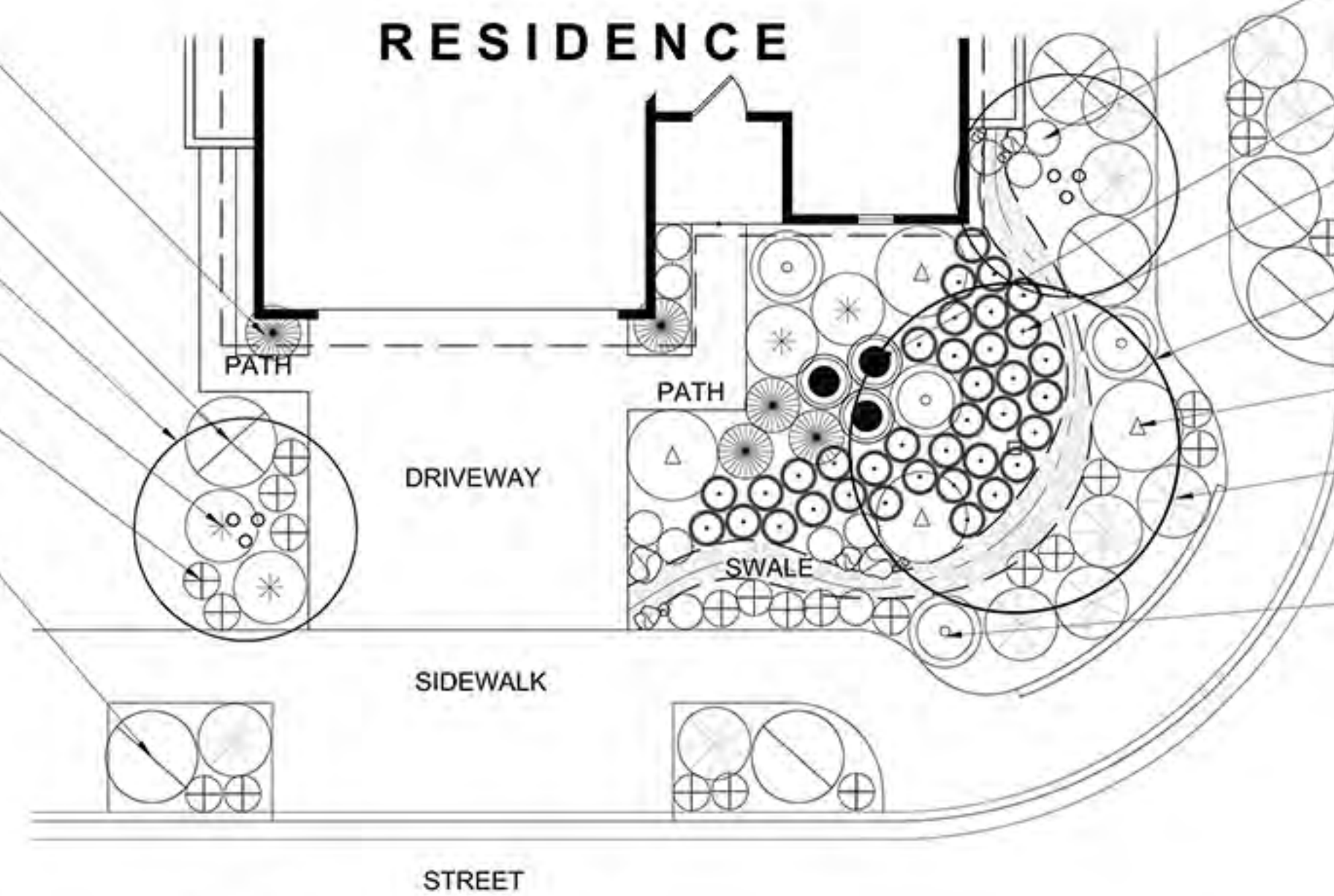
NOTE:
SWALE ON CONCEPTUAL PLAN
Many turf removal programs now require at least one sustainable element to qualify for rebates. This landscape template features a 'swale'. Soil is lightly contoured to infiltrate water falling on site. Width may vary and 6"-8" depth is all that is typically required to infiltrate rainfall. Decorative boulders may also be used for a 'dry creek' style swale. Swales are not required to feature rocks or boulders. Sides should be gently sloping no more than 30 per cent to discourage erosion.



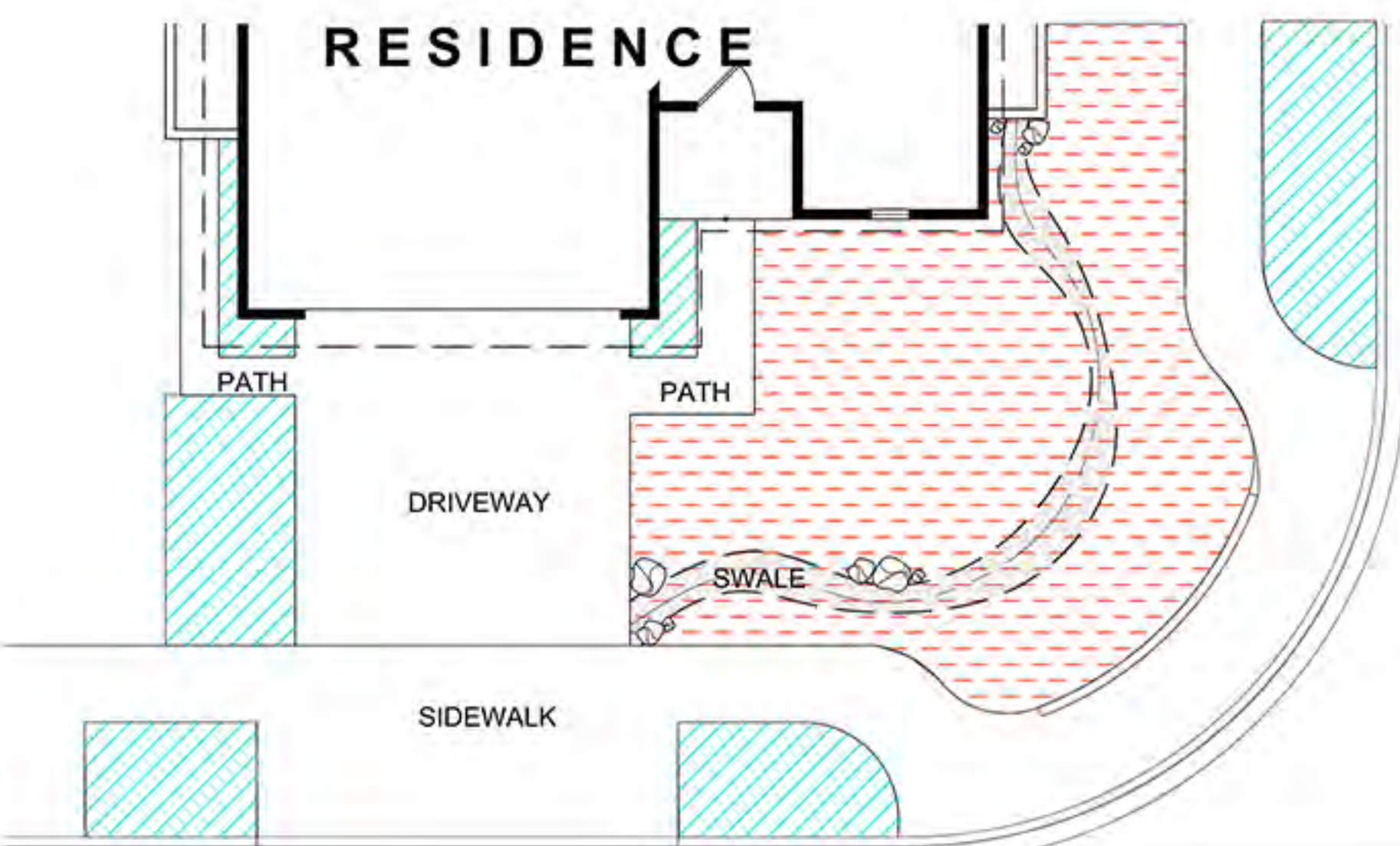
PEBBLES/BOULDERS SHOULD NOT IMPEDE MOVEMENT/INFILTRATION
SWALE MAY BE PLANTED OR AS 'DRY CREEK' WITH PEBBLES, BOULDERS



PLANTING PLAN



HYDROZONE PLAN



JUNCUS PATENS
CALIFORNIA GREY RUSH, 9@1G

VERBENA LILACINA 'DE LA MINA'
DE LA MINA LILAC VERBENA, 3@1G

CAREX TUMULICOLA
FOOTHILL SEDGE, 36@1G

LYONOTHAMNUS FLORIBUNDUS SSP ASPLENIFOLIUS
FERN-LEAF CATALINA IRONWOOD, 1@24" BOX

SPHAERALCEA FULVA 'LA LUNA'
LA LUNA GLOBEMALLOW, 3@1G

BACCHARIS 'PIGEON POINT'
PIGEON POINT COYOTE BUSH, 10@1G

PENSTEMON SPECTABILIS
SHOWY PENSTEMON, 4@1G

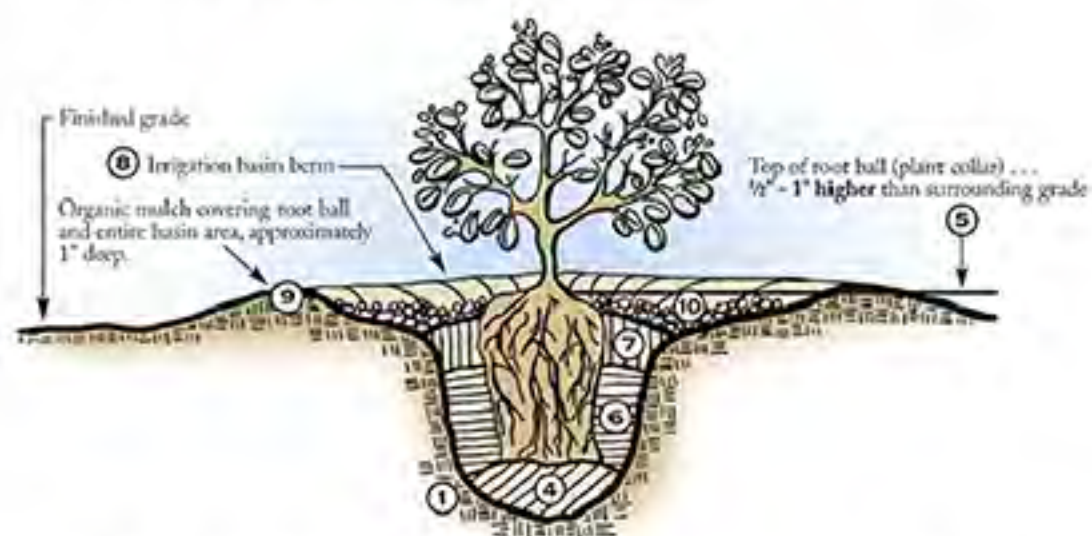
GENERAL NOTES:

This garden is designed with plant groupings typical of a natural setting. Local species as well as native plant varieties from coastal environments have been selected and placed based on climate requirements. Adding permeable hardscape surfaces and contouring the land allows rainwater to replenish the soil without runoff.

As it matures, this garden will become diverse and layered. It will come to life with different plant species, butterflies, hummingbirds and seasonal flowers. The initial establishment period of the garden is 3 months - when watering must be carefully attended to. Your garden will be considered 'mature' in approximately 3 years. Trees take longer to mature and a deep root system should be encouraged by periodic deep watering. After the first year, your garden will require reduced summer watering (deeply, every 3 weeks). It is possible to have a healthy, happy native garden utilizing hand-watering only.

To reduce overspray, runoff and to enhance landscape water conservation use the following guidelines when planting and designing irrigation:

- 1) Inline drip irrigation may be used in all garden areas less than 6 feet in width.
- 2) For areas over 6 feet adjustable rotating nozzles may be used
- 3) Mediterranean and native plants require the plant crown area to drain. Plant with crowns 1" above grade to discourage water sitting at base of plant and to direct moisture toward outer root zone. Plant to discourage later settling of plants into a depression. Plant crowns must remain slightly above grade after settling.
- 4) Mulch all garden beds with 3" small to medium bark mulch.
- 5) If soil amendment (compost) is used to increase soil organic matter, use no more than 20 per cent compost to native backfill.



PLANTING TECHNIQUE FOR NATIVE AND MEDITERRANEAN PLANTS
(USED WITH PERMISSION: Tree of Life Nursery www.californianativeplants.com)

TREES



LYONOTHAMNUS
FERNLEAF CATALINA IRONWOOD



CERCIS OCCIDENTALIS
WESTERN REDBUD



WESTERN REDBUD DETAIL

SHRUBS



ARCTOSTAPHYLOS
DENSIFLORA 'HOWARD MCMINN'
HOWARD MCMINN MANZANITA



HOWARD MCMINN MANZANITA
DETAIL



RHAMNUS CALIFORNICA
'MOUND SAN BRUNO'
SAN BRUNO MOUND COFFEEBERRY

FLOWERING



PENSTEMON SPECTABILIS
SHOWY PENSTEMON



GALVEZIA SPECIOSA 'FIRECRACKER'
FIRECRACKER ISLAND SNAPDRAGON
MATURE AND FLOWER DETAIL



VERBENA LILACINA 'DE LA MINA'
DE LA MINA LILAC VERBENA



ACCENTS



CALYLOPHUS HARTWEGII
SUNDROPS



JUNCUS PATENS
CALIFORNIA GREY RUSH



SPHAERALCEA FULVA 'LA LUNA'
LA LUNA GLOBEMALLOW

GROUND COVER



CAREX TUMULICOLA
FOOTHILL SEDGE



ARTEMISIA 'MONTARA'
MONTARA SAGEBUSH

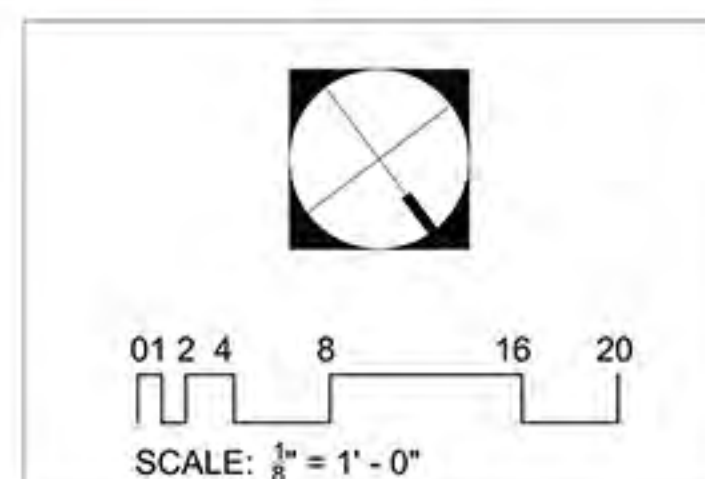


BACCHARIS PILULARIS 'PIGEON POINT'
PIGEON POINT COYOTE BUSH (LOW)

NORTHPARK

Corner - Sun/Pt. Shade

California Friendly Planting/Native



JODIE COOK
QWEL WWLP ASLA
SITES AP
LANDSCAPE DESIGN
www.jodiecookdesign.com
949-291-8003

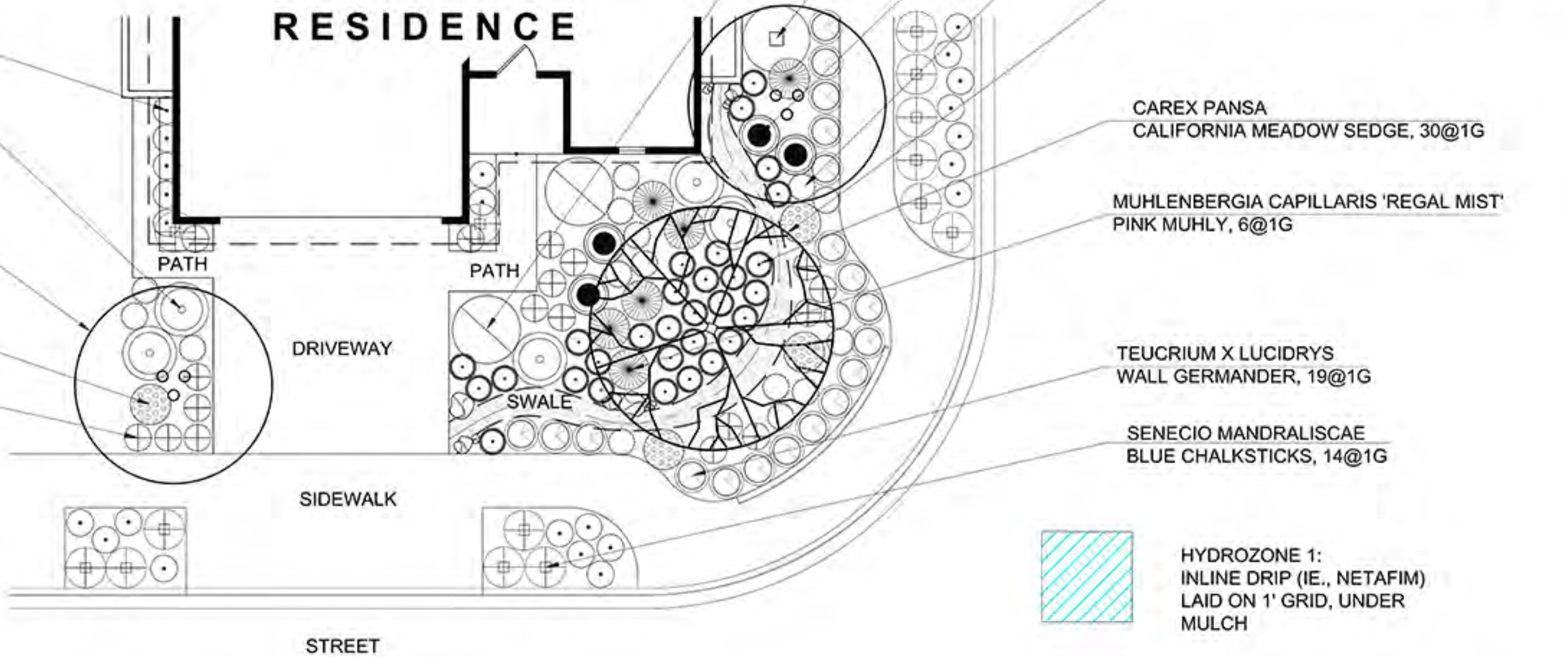


SMITH / architects

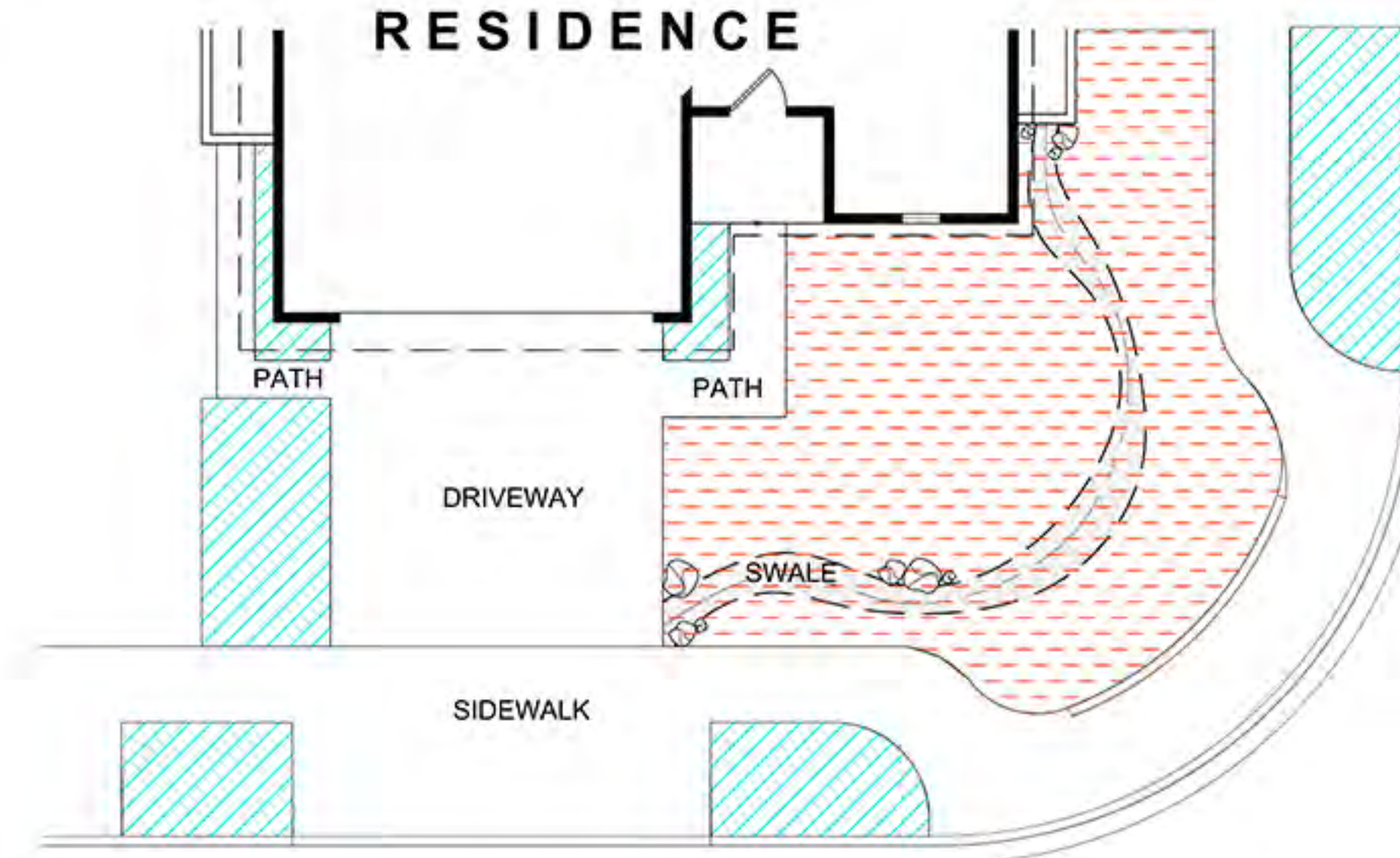
PROPOSED PLANT PALETTE 10 28 2021

WUCOLS - NORTH PARK Traditional Corner			
Type	Botanical Name	Common Name	Water Use
T	Arbutus 'Marina'	Marina Strawberry Tree	Low
T	Olea europaea 'Majestic Beauty'	Majestic Beauty Fruitless Olive	Low
S	Dodonaea viscosa 'Purpurea'	Purple-leaved Hop-bush	Low
SA	Lavandula angustifolia 'Hidcote'	Hidcote Blue English Lavender	Low
PS	Perovskia atriplicifolia	Russian Sage	Low
S	Rosa floribunda 'Iceberg'	White Shrub Rose	Mod
PS	Salvia leucantha 'Midnight'	Purple Mexican Sage	Low
P	Verbena bonariensis	Purpletop Vervain	Low
PN	Carex pansa	California Meadow Sedge	Mod
G	Muhlenbergia capillaris 'Regal Mist'	Pink Muhly	Mod
Gc P	Achillea 'Moonshine'	Moonshine Yarrow	Mod
P	Teucrium x lucidrys	Wall Germander	Low
PN	Calandrinia grandiflora	Rock Purslane	Low
Gc P Su	Senecio mandraliscae	Blue Finger	Low

PLANTING PLAN

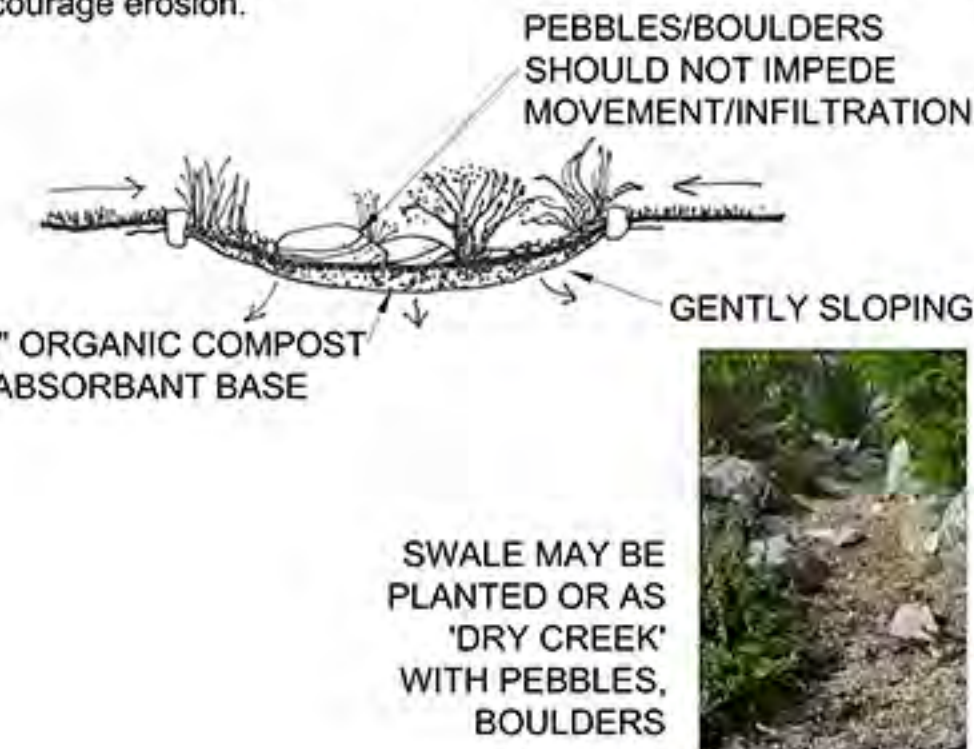


HYDROZONE PLAN



- HYDROZONE 1:**
INLINE DRIP (IE., NETAFIM)
LAID ON 1' GRID, UNDER
MULCH
- HYDROZONE 2:**
ROTATING NOZZLES (IE., MP ROTATORS)
FULL COVERAGE, ADJUST FOR
NO OVERSPRAY TO HARDSCAPE

NOTE:
SWALE ON CONCEPTUAL PLAN
Many turf removal programs now require at least one sustainable element to qualify for rebates. This landscape template features a 'swale'. Soil is lightly contoured to infiltrate water falling on site. Width may vary and 6"-8" depth is all that is typically required to infiltrate rainfall. Decorative boulders may also be used for a 'dry creek' style swale. Swales are not required to feature rocks or boulders. Sides should be gently sloping no more than 30 per cent to discourage erosion.



SWALE MAY BE
PLANTED OR AS
'DRY CREEK'
WITH PEBBLES,
BOULDERS

TREES



OLEA EUROPAEA 'MAJESTIC BEAUTY'
MAJESTIC BEAUTY FRUITLESS OLIVE



ARBUTUS 'MARINA'
MARINA STRAWBERRY TREE



ARBUTUS MARINA DETAIL

SHRUBS/GROUNDCOVERS



DODONAEA VISCOSA 'PURPUREA'
PURPLE-LEAFED HOP-BUSH



PEROVSKIA ATRIPLICIFOLIA
RUSSIAN SAGE



TEUCRIMUM X LUCIDRYS
WALL GERMANDER (AS EDGE)



CAREX PANSA
CALIFORNIA MEADOW SEDGE

FLOWERING



LAVANDULA ANGUSTIFOLIA 'HIDCOTE'
HIDCOTE BLUE ENGLISH LAVENDER



ACHILLEA 'MOONSHINE'
MOONSHINE YARROW

ACCENTS



MUHLENBERGIA CAPILLARIS
'REGAL MIST'
PINK MUHLY



SALVIA LUECANTHA 'MIDNIGHT'
PURPLE MEXICAN SAGE



ROSE 'ICEBERG'
WHITE SHRUB ROSE



VERBENA
BONARIENSIS

SUCCULENTS



CALANDRINIA GRANDIFLORA
ROCK PURSLANE



SENECIO MADRALISCAE
BLUE CHALKSTICKS

GENERAL NOTES:

This garden is designed with plant groupings typical of a traditional/conventional garden type. Local species as well as native plant varieties from coastal environments have been selected and placed based on climate requirements. Adding permeable hardscape surfaces and contouring the land allows rainwater to replenish the soil without runoff.

As it matures, this garden will become diverse and layered. It will come to life with different plant species and seasonal flowers. The initial establishment period of the garden is 3 months - when watering must be carefully attended to. Your garden will be considered 'mature' in approximately 3 years. Trees take longer to mature and a deep root system should be encouraged by periodic deep watering.

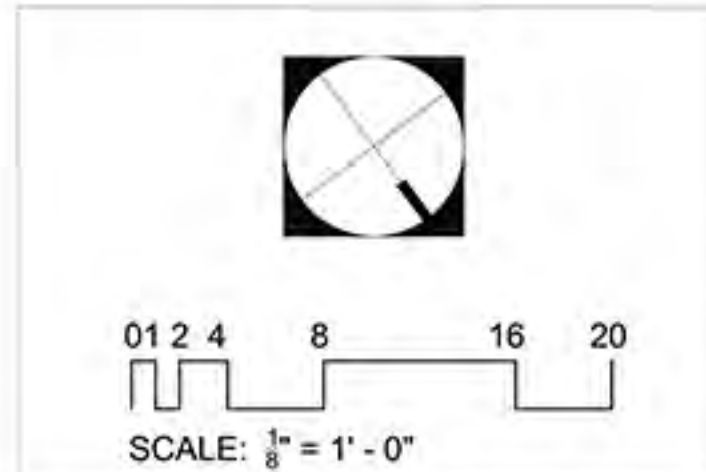
To reduce overspray, runoff and to enhance landscape water conservation use the following guidelines when planting and designing irrigation:

- 1) Inline drip irrigation maybe used in all garden areas less than 6 feet in width.
- 2) For areas over 6 feet adjustable rotating nozzles may be used
- 3) Mediterranean and native plants require the plant crown area to drain. Plant with crowns 1" above grade to discourage water sitting at base of plant and to direct moisture toward outer root zone. Plant to discourage later settling of plants into a depression. Plant crowns must remain slightly above grade after settling.
- 4) Mulch all garden beds with 3" small to medium bark mulch.
- 5) If soil amendment (compost) is used to increase soil organic matter, use no more than 20 per cent compost to native backfill.



PLANTING TECHNIQUE FOR NATIVE AND MEDITERRANEAN PLANTS
(USED WITH PERMISSION: Tree of Life Nursery www.californianativeplants.com)

NORTH PARK
Corner
Traditional Planting - Sun/Pt. Shade



JODIE COOK
QWEL WWLP ASLA
SITES AP
LANDSCAPE DESIGN
www.jodiecookdesign.com
949-291-8003



SMITH / architects

Type(s)	Botanical Name	Common Name	Water Use	ET %
Ground Cover, Perennial, California Native	Achillea millefolium (CA native cultivars)	yarrow	Low	10-30
Perennial, California Native	Carex tumulicola	Berkeley sedge	Low	10-30
Ground Cover, Shrub, California Native	Baccharis pilularis cvs.	dwarf coyote brush	Low	10-30
Shrub	Salvia chamaedryoides	blue sage	Low	10-30
Ground Cover, Shrub, California Native	Arctostaphylos edmundsii cvs	manzanita Carmel Sur etc.	Low	10-30
Shrub, California Native, Arboretum All-star	Arctostaphylos densiflora cvs.	manzanita Howard McMinn	Low	10-30
Perennial, California Native	Penstemon SW native spp. and cvs.	penstemon (SW natives)	Low	10-30
Shrub, California Native	Mimulus hybrids (shrubby) (Diplacus)	monkey flower	Low	10-30
Perennial, California Native	Juncus patens and cvs.	California grey rush	Low	10-30
Shrub, California Native, Arboretum All-star	Heteromeles arbutifolia	toyon	Very Low	< 10
Tree	Handroanthus impetiginosus (Tabebuia impetiginosa)	pink/tavender trumpet tree	Moderate/Medium	40-60
Perennial	Gaura lindheimeri and cvs.	gaura	Low	10-30
Ornamental Grass, California Native	Elymus condensatus 'Canyon Prince'	canyon prince wild rye	Low	10-30

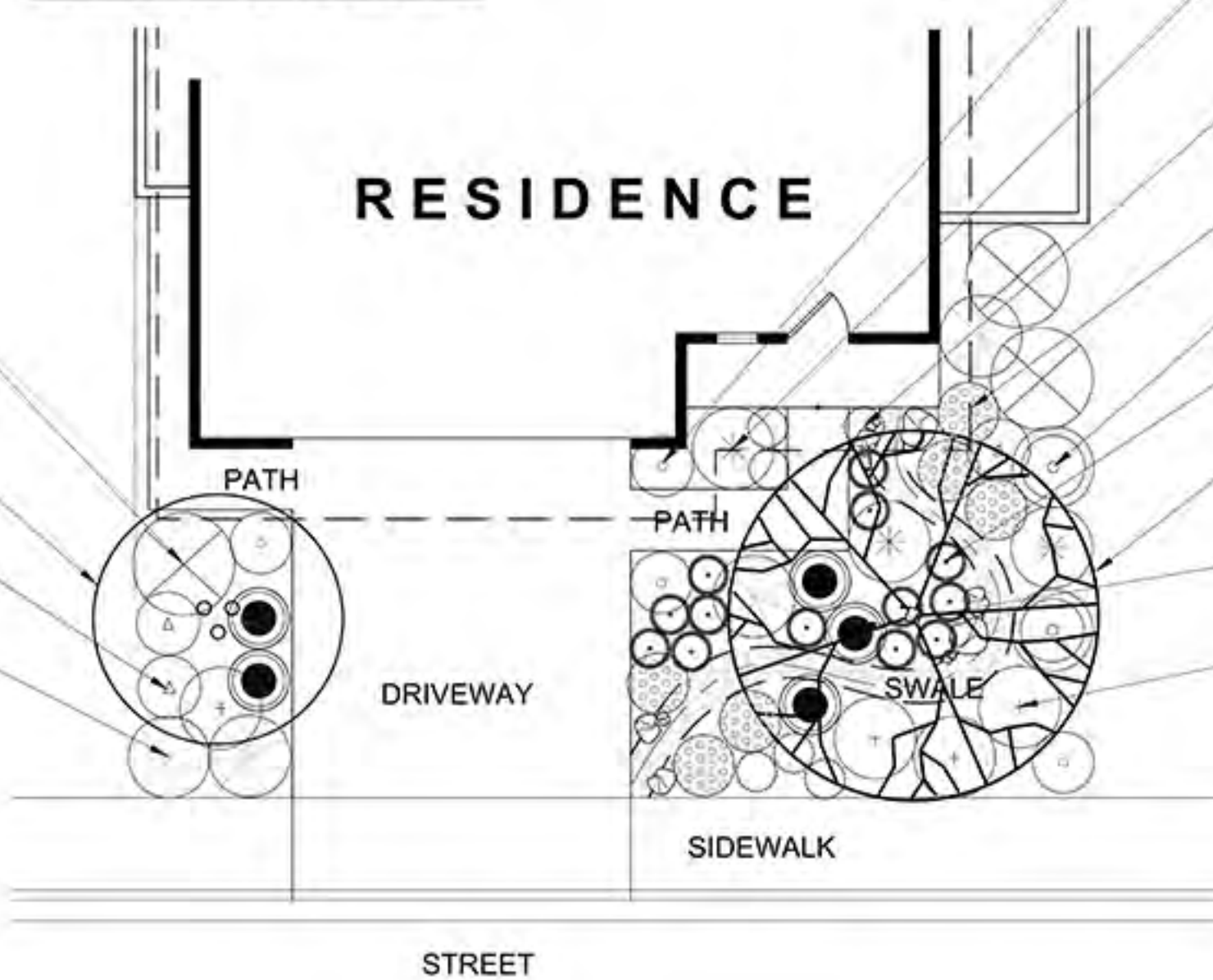
PLANTING PLAN

ARCTOSTAPHYLOS DENSIFLORA 'HOWARD MCMINN'
HOWARD MCMINN MANZANITA, 3@15G

HETEROMELES ARBUTIFOLIA
TOYON 1@15 G
(TRAIN AS SMALL MULTI-TRUNK TREE)

GAURA LINDHEIMERI
GAURA 3@1G

BACCHARIS 'TWIN PEAKS'
TWIN PEAKS DWARF COYOTE BUSH 4@1G



PENSTEMON MARGARITA BOP
FOOTHILL PENSTEMON 4@1G

ARCTOSTAPHYLOS CARMEL SUR
CARMEL SUR MANZANITA 3@5G

ACHILLEA MILLEFOLIUM
COMMON YARROW, 6@1G

SALVIA CHAMAEDRYOIDES
GERMANDER SAGE 6@1G

PENSTEMON SPECTABILIS
SHOWY PENSTEMON, 2@1G

CAREX TUMULICOLA
FOOTHILL SEDGE, 13@1G

TABEBUIA IMPETIGINOSA
PINK TRUMPET TREE
1@24" BOX

MIMULUS JELLY BEAN WHITE
MONKEYFLOWER 5@1G

LEYMUS CONDENSATUS 'CANYON PRINCE'
CANYON PRINCE WILD RYE, 4@1G

GENERAL NOTES:

This garden is designed with plant groupings typical of a natural setting. Local species as well as native plant varieties from coastal environments have been selected and placed based on climate requirements. Adding permeable hardscape surfaces and contouring the land allows rainwater to replenish the soil without runoff.

As it matures, this garden will become diverse and layered. It will come to life with different plant species, butterflies, hummingbirds and seasonal flowers. The initial establishment period of the garden is 3 months - when watering must be carefully attended to. Your garden will be considered 'mature' in approximately 3 years. Trees take longer to mature and a deep root system should be encouraged by periodic deep watering. After the first year, your garden will require reduced summer watering (deeply, every 3 weeks). It is possible to have a healthy, happy native garden utilizing hand-watering only.

To reduce overspray, runoff and to enhance landscape water conservation use the following guidelines when planting and designing irrigation:

- 1) Inline drip irrigation maybe used in all garden areas less than 6 feet in width.
- 2) For areas over 6 feet adjustable rotating nozzles may be used
- 3) Mediterranean and native plants require the plant crown area to drain. Plant with crowns 1" above grade to discourage water sitting at base of plant and to direct moisture toward outer root zone. Plant to discourage later settling of plants into a depression. Plant crowns must remain slightly above grade after settling.
- 4) Mulch all garden beds with 3" small to medium bark mulch.
- 5) If soil amendment (compost) is used to increase soil organic matter, use no more than 20 per cent compost to native backfill.

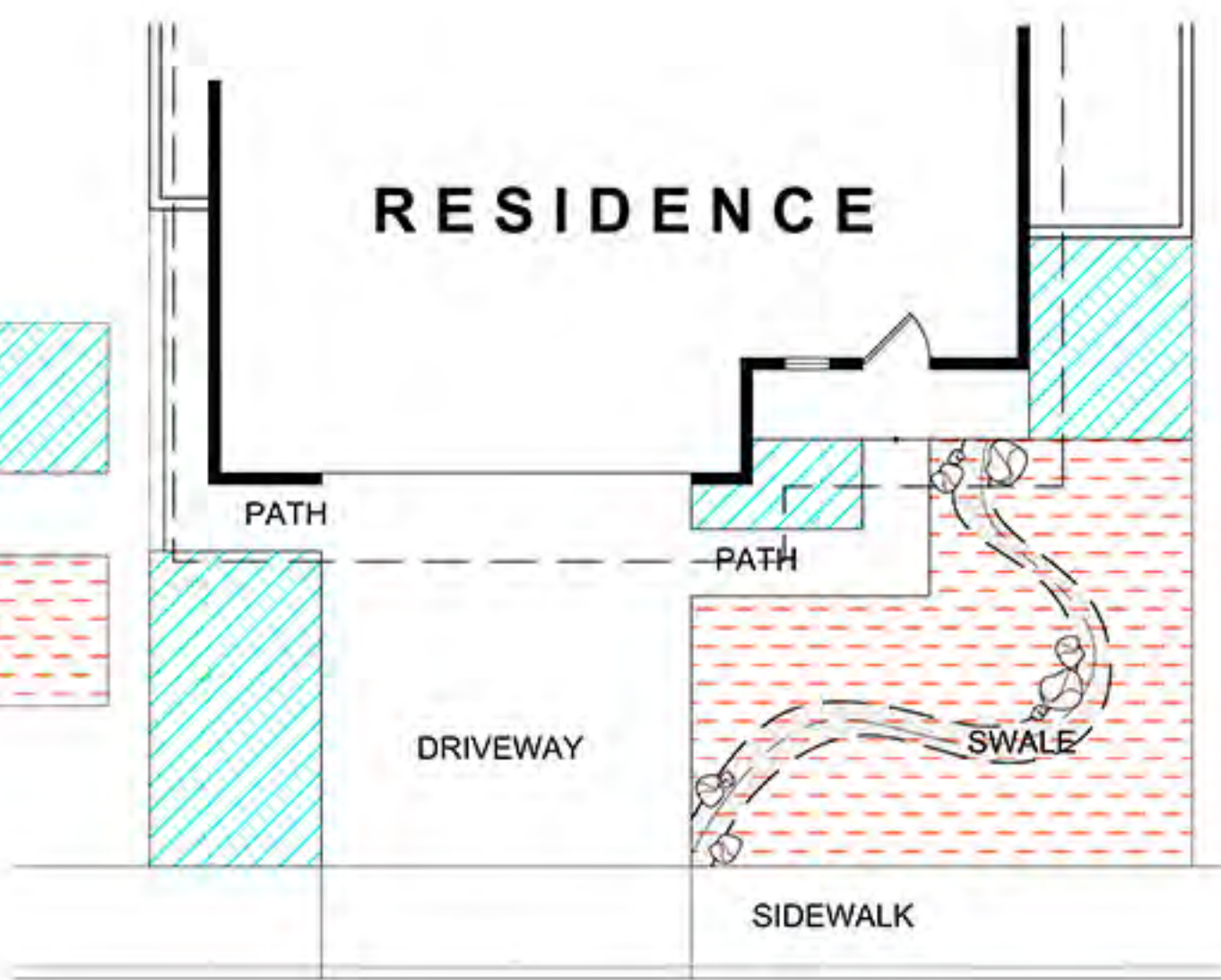


PLANTING TECHNIQUE FOR NATIVE AND MEDITERRANEAN PLANTS
(USED WITH PERMISSION: Tree of Life Nursery www.californianativeplants.com)

HYDROZONE PLAN

HYDROZONE 1:
INLINE DRIP (IE., NETA-FIM)
LAID ON 1' GRID, UNDER
MULCH

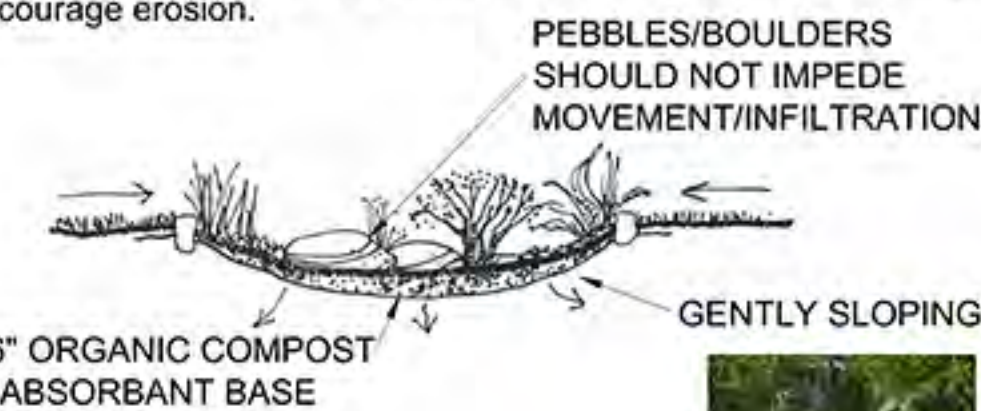
HYDROZONE 2:
ROTATING NOZZLES (IE., MP
ROTATORS)
FULL COVERAGE, ADJUST
FOR NO OVERSPRAY TO
HARDSCAPE



NOTE:

SWALE ON CONCEPTUAL PLAN

Many turf removal programs now require at least one sustainable element to qualify for rebates. This landscape template features a 'swale'. Soil is lightly contoured to infiltrate water falling on site. Width may vary and 6"-8" depth is all that is typically required to infiltrate rainfall. Decorative boulders may also be used for a 'dry creek' style swale. Swales are not required to feature rocks or boulders. Sides should be gently sloping no more than 30 per cent to discourage erosion.



SWALE MAY BE
PLANTED OR AS
'DRY CREEK'
WITH PEBBLES,
BOULDERS

TREES



TABEBUIA IMPETIGINOSA
PINK TRUMPET TREE



FLOWER DETAIL
PINK TRUMPET TREE



HETEROMELES ARBUTIFOLIA
TOYON

SHRUBS



ARCTOSTAPHYLOS
DENSIFLORA 'HOWARD MCMINN'
HOWARD MCMINN MANZANITA



HOWARD MCMINN MANZANITA
DETAIL

FLOWERING



PENSTEMON MARGARITA BOP
FOOTHILL PENSTEMON



GAURA LINDHEIMERI
GAURA



MIMULUS HYBRID
MONKEYFLOWER



PENSTEMON SPECTABILIS
SHOWY PENSTEMON

ACCENTS



ACHILLEA MILLFOLIUM
COMMON YARROW
(OR CULTIVARS)



LEYMUS CONDENSATUS 'CANYON PRINCE'
CANYON PRINCE WILD RYE



SALVIA CHAMAEDRYOIDES
GERMANDER SAGE

GROUND COVER



CAREX TUMULICOLA
FOOTHILL SEDGE



BACCHARIS 'TWIN PEAKS'
TWIN PEAKS DWARF COYOTE BUSH

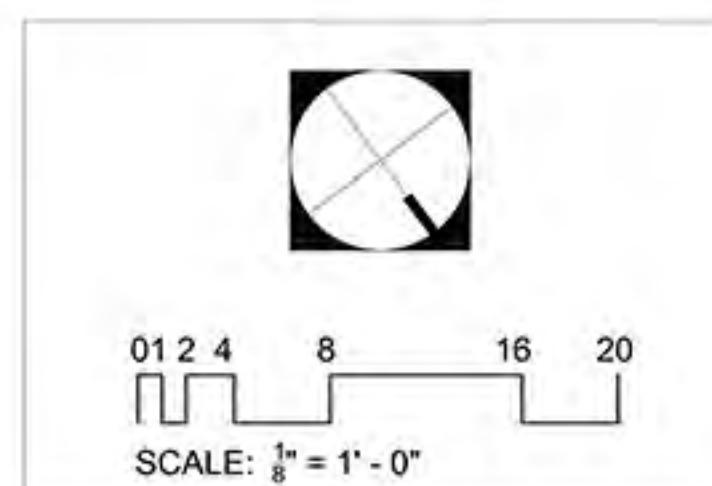


ARCTOSTAPHYLOS 'CARMEL SUR'
CARMEL SUR ARCTOSTAPHYLOS

NORTHPARK

Mid-Block

California Friendly Planting - Pt. Sun



SCALE: 1/8" = 1' - 0"

JODIE COOK
QWEL WWLP ASLA
SITES AP
LANDSCAPE DESIGN
www.jodiecookdesign.com
949-291-8003

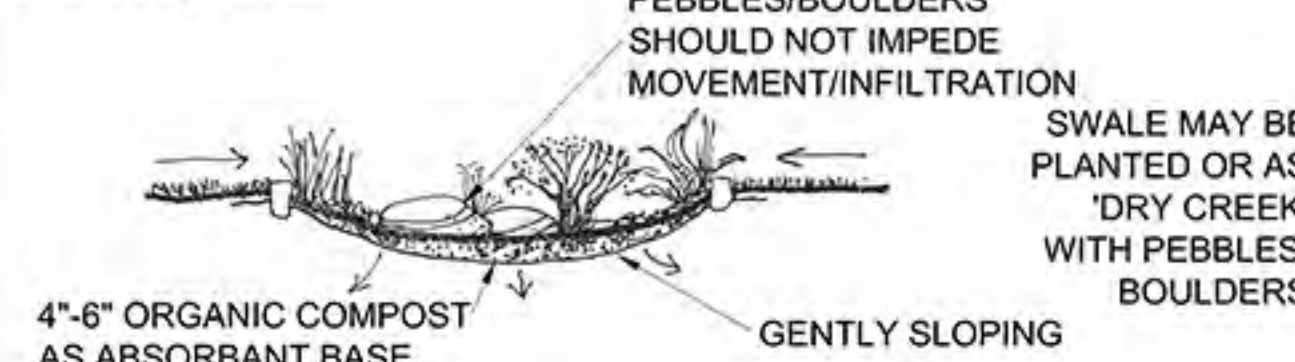


SMITH / architects

WUCOLS - NORTHPARK - CA Friendly-Classic Mediterranean

Type(s)	Botanical Name	Common Name	Water Use	ET %
Ground Cover, Perennial, California Native	Achillea millefolium (CA native cultivars)	yarrow	Low	10-30
Ground Cover	Convolvulus mauritanicus	ground morning glory	Low	10-30
Ground Cover, Shrub	Cistus spp. and cvs.	rockrose	Low	10-30
Shrub	Vitex trifolia "Purpurea"	Arabian lilac	Low	10-30
Ornamental Grass, California Native	Aristida purpurea	purple three-awn	Very Low	< 10
Shrub	Rosmarinus officinalis	rosemary	Very Low	< 10
Shrub, California Native, Arboretum All-star	Arctostaphylos densiflora cvs	Howard McMinn, Sentinel	Low	10-30
Tree	Arbutus "Marina"	Marina arbutus	Low	10-30
Perennial	Limonium perezii	statice	Low	10-30
Shrub	Leonotis leonurus	lion's tail	Low	10-30
Shrub, Arboretum All-star	Lavandula spp. & cvs.	lavender	Low	10-30
Ground Cover	Lantana hybrids	hybrid lantana	Low	10-30
Shrub, Tree, Succulent, California Native	Aloe spp. (CA native and non-native)	aloe	Low	10-30
Perennial, Shrub	Agave attenuata	agave	Low	10-30
Perennial, Shrub, Succulent, Arboretum All-star	Echeveria spp.	hens and chickens	Low	10-30

NOTE:
SWALE ON CONCEPTUAL PLAN
Many turf removal programs now require at least one sustainable element to qualify for rebates. This landscape template features a 'swale'. Soil is lightly contoured to infiltrate water falling on site. Width may vary and 6"-8" depth is all that is typically required to infiltrate rainfall. Decorative boulders may also be used for a 'dry creek' style swale. Swales are not required to feature rocks or boulders. Sides should be gently sloping no more than 30 per cent to discourage erosion.



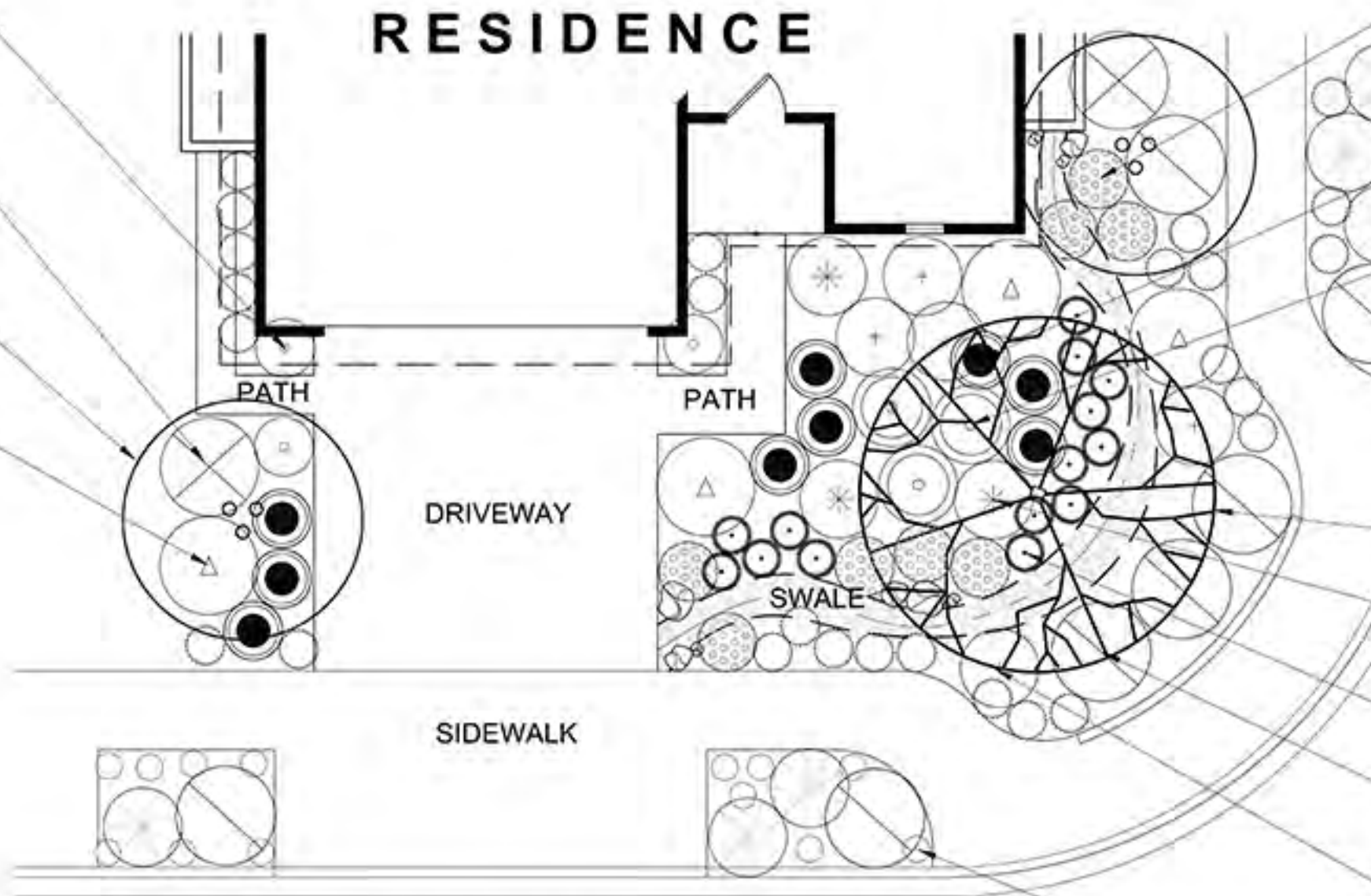
LAVANDULA 'HIDCOTE BLUE'
HIDCOTE BLUE LAVENDER 3@1G

ARCTOSTAPHYLOS DENSIFLORA 'HOWARD MCMINN'
HOWARD MCMINN MANZANITA, 2@15G

VITEX TRIFOLIA 'PURPUREA'
ARABIAN LILAC, 2@24" BOX (TREE FORM)

LEONOTIS LEONURUS
LIONSTAIL 4@1G

PLANTING PLAN



LIMONIUM PEREZII
SEA LAVENDER 8@1G

ROSMARINUS OFFICINALIS 'PROSTRATUS'
CREEPING ROSEMARY, 6@1G

ARISTIDA PURPUREA
PURPLE THREE AWN 9@1G

ALOE VERA
MEDICINAL ALOE 3@1G

ACHILLEA MILLEFOLIUM
YARROW, 29@1G

ARBUS 'MARINA'
MARINA STRAWBERRY TREE 1@24" BOX

CISTUS 'SUNSET'
SUNSET ROCKROSE, 3@1G

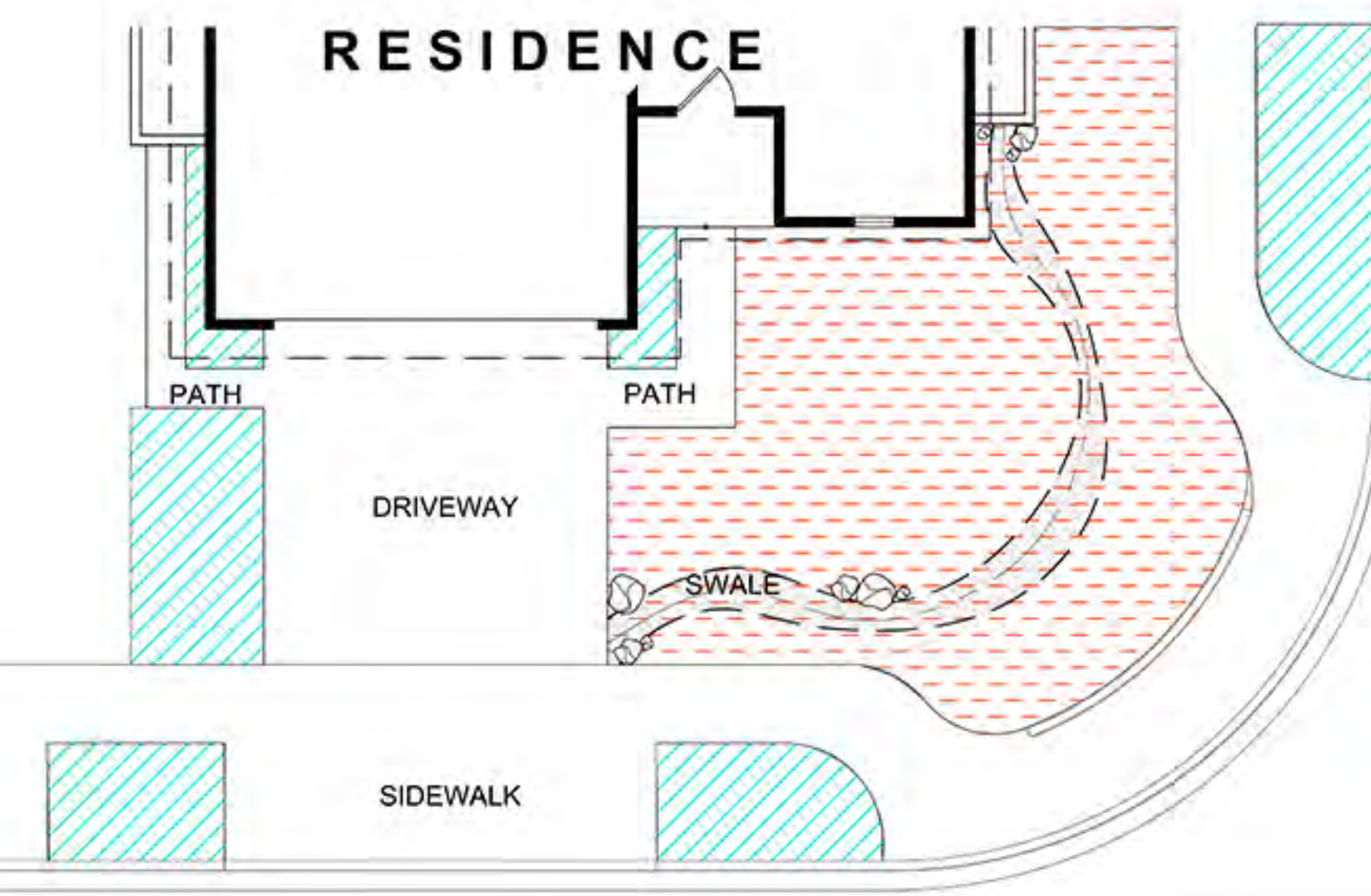
CONVOLVULUS SABIATUS
GROUND MORNING GLORY 14@1G

LANTANA 'SPREADING SUNSET'
SPREADING SUNSET LANTANA 7@1G

AGAVE ATTENUATA
FOXTAIL AGAVE, 5@1G

ECHEVERIA IMBRICATA
BLUE ROSE ECHEVERIA 13@1G

HYDROZONE PLAN



HYDROZONE 1:
INLINE DRIP (IE., NETAFIM)
LAID ON 1' GRID, UNDER MULCH

HYDROZONE 2:
ROTATING NOZZLES (IE., MP ROTATORS)
FULL COVERAGE, ADJUST FOR
NO OVERSPRAY TO HARDSCAPE

GENERAL NOTES:

This garden is designed with plant groupings typical of a Mediterranean setting. Plant varieties from Mediterranean environments, California's and abroad, have been selected and placed based on climate requirements. Adding permeable hardscape surfaces and contouring the land allows rainwater to replenish the soil without runoff.

As it matures, this garden will become diverse and layered. It will come to life with different plant species, butterflies, hummingbirds and seasonal flowers. The initial establishment period of the garden is 3 months - when watering must be carefully attended to. Your garden will be considered 'mature' in approximately 3 years. Trees take longer to mature and a deep root system should be encouraged by periodic deep watering. After the first year, your garden will require reduced summer watering (deeply, every 3 weeks). It is possible to have a healthy, happy native garden utilizing hand-watering only.

To reduce overspray, runoff and to enhance landscape water conservation use the following guidelines when planting and designing irrigation:

- 1) Inline drip irrigation may be used in all garden areas less than 6 feet in width.
- 2) For areas over 6 feet adjustable rotating nozzles may be used
- 3) Mediterranean and native plants require the plant crown area to drain. Plant with crowns 1" above grade to discourage water sitting at base of plant and to direct moisture toward outer root zone. Plant to discourage later settling of plants into a depression. Plant crowns must remain slightly above grade after settling.
- 4) Mulch all garden beds with 3" small to medium bark mulch.
- 5) If soil amendment (compost) is used to increase soil organic matter, use no more than 20 per cent compost to native backfill.



PLANTING TECHNIQUE FOR NATIVE AND MEDITERRANEAN PLANTS
(USED WITH PERMISSION: Tree of Life Nursery www.californianativeplants.com)

TREES



ARBUS 'MARINA'
MARINA STRAWBERRY TREE



ARBUS 'MARINA' DETAIL



VITEX TRIFOLIA 'PURPUREA'
ARABIAN LILAC
(WITH LEAF & FLOWER DETAIL)

SHRUBS



ARCTOSTAPHYLOS
DENSIFLORA 'HOWARD MCMINN'
HOWARD MCMINN MANZANITA



SALVIA 'WINIFRED GILMAN'
WINIFRED GILMAN CLEVELAND SAGE



LANTANA 'SPREADING SUNSET'
SPREADING SUNSET LANTANA

FLOWERING



LIMONIUM PEREZII
SEA LAVENDER



CISTUS 'SUNSET'
SUNSET ROCKROSE



LAVANDULA ANGUSTIFOLIA
'HIDCOTE'
HIDCOTE BLUE ENGLISH LAVENDER



LEONOTIS LEONORUS
LION'S TAIL

ACCENTS



ACHILLEA MILLEFOLIUM
COMMON YARROW
(OR CULTIVARS)



ARISTIDA PURPUREA
PURPLE THREE AWN



ECHEVERIA IMBRICATA
HENS AND CHICKS



AGAVE ATTENUATA
FOXTAIL AGAVE

GROUND COVER

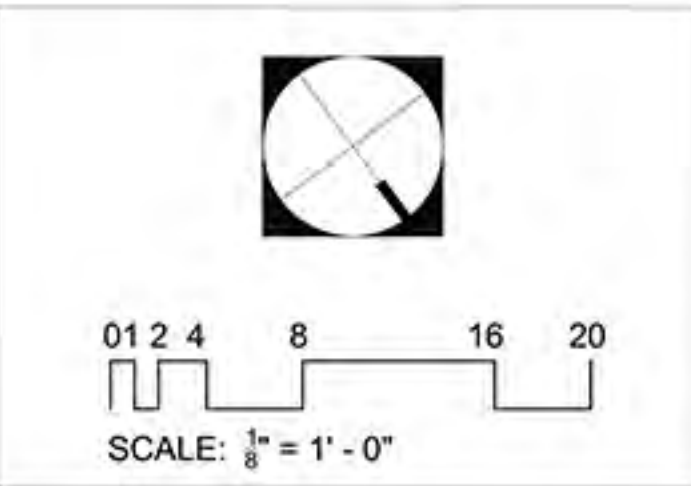


ROSMARINUS 'PROSTRATUS'
CREEPING ROSEMARY



CONVOLVULUS SABIATUS
GROUND MORNING GLORY

NORTHPARK
Corner - Pt. Shade/Sun
California Friendly-Mediterranean



JODIE COOK
QWEL WWLP ASLA
SITES AP
LANDSCAPE DESIGN
www.jodiecookdesign.com
949-291-8003



SMITH / architects

WUCOLS - NORTHPARK CA Friendly/Native				
Type(s)	Botanical Name	Common Name	Water Use	ET %
Ground Cover, Perennial, California Native	Achillea millefolium (CA native cultivars)	yarrow	Low	10-30
Tree, California Native	Chilopsis linearis	desert willow	Very Low	< 10
Perennial, California Native	Carex tumulicola	Berkeley sedge	Low	10-30
Tree, California Native	Umbellularia californica	California bay	Low	10-30
Shrub, California Native, Arboretum All-star	Salvia clevelandii & hybrids	salvia Cleveland/Alan Chickering etc.	Very Low	< 10
Ground Cover, Perennial, California Native	Salvia "Dara's Choice"	Sonoma sage	Low	10-30
Shrub, California Native, Arboretum All-star	Arctostaphylos densiflora cvs.	manzanita cvs. e.g. Howard McMinn, Sentinel	Low	10-30
Perennial, California Native	Penstemon SW native spp. and cvs.	penstemon (SW natives)	Low	10-30
Perennial, California Native	Juncus patens and cvs.	California grey rush	Low	10-30
Perennial, California Native	Glandularia filicina and cvs. (Verbena lilacina)	liac verbena	Low	10-30
Shrub, California Native	Gambelia speciosa & cvs. (Galvezia speciosa & cvs.)	island bush snapdragon	Very Low	< 10

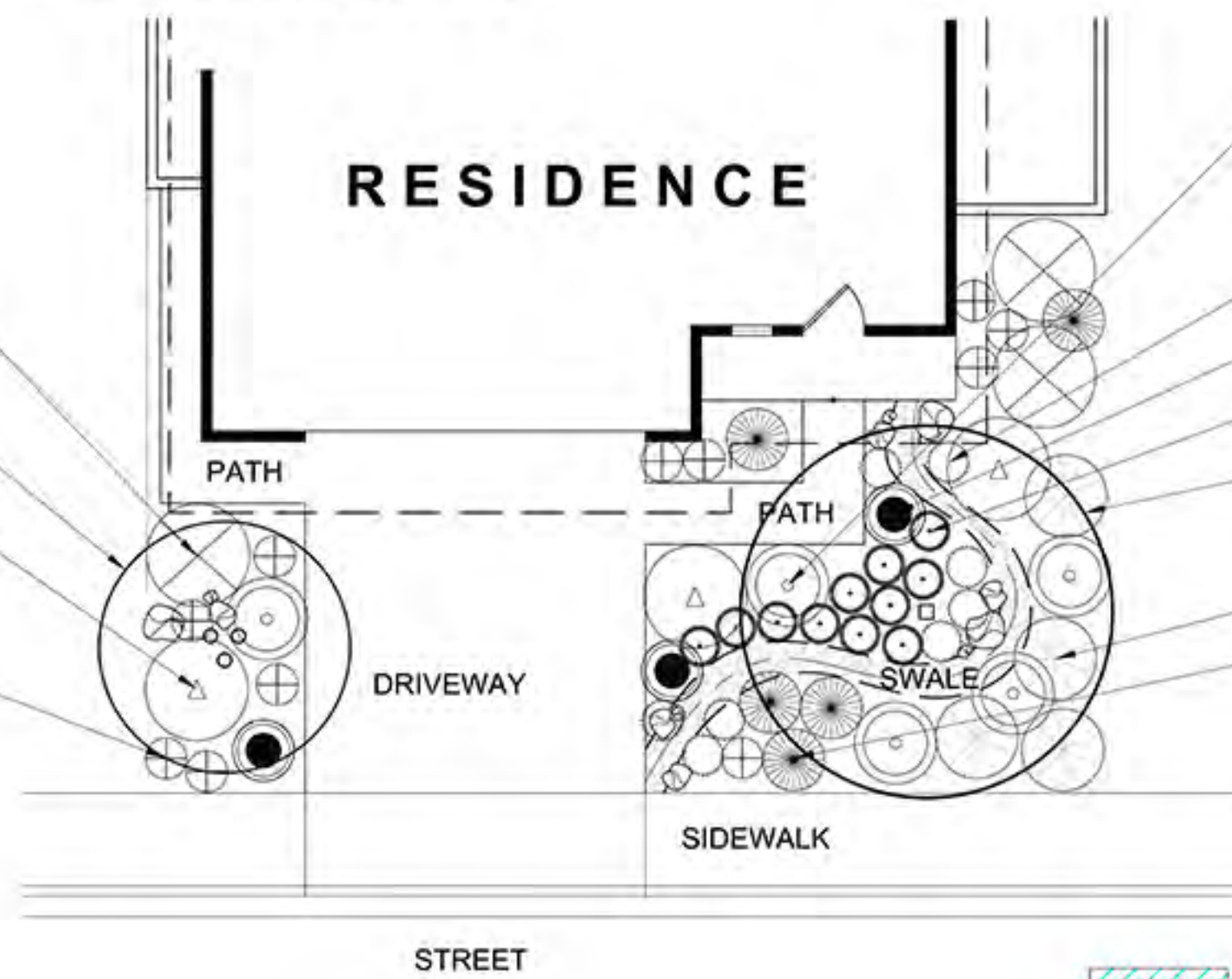
PLANTING PLAN

ARCTOSTAPHYLOS DENSIFLORA 'HOWARD MCMINN'
HOWARD MCMINN MANZANITA, 3@15G

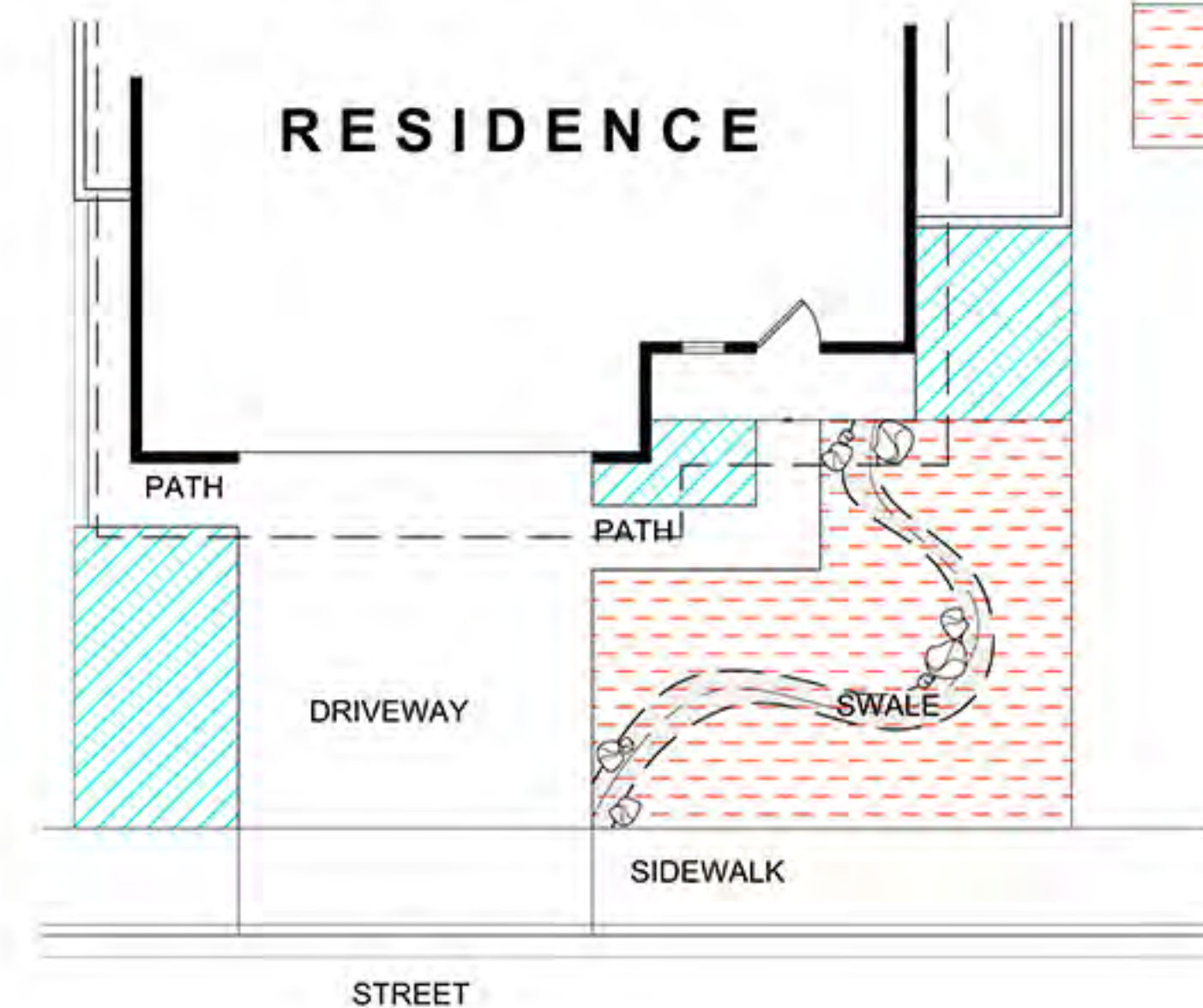
CHILOPSIS LINEARIS
DESERT WILLLOW, 1@24" BOX

SALVIA 'WINIFRED GILMAN'
WINIFRED GILMAN CLEVELAND SAGE
3@5G

ACHILLEA MILLEFOLIUM
COMMON YARROW,
(OR CULTIVARS) 10@1G



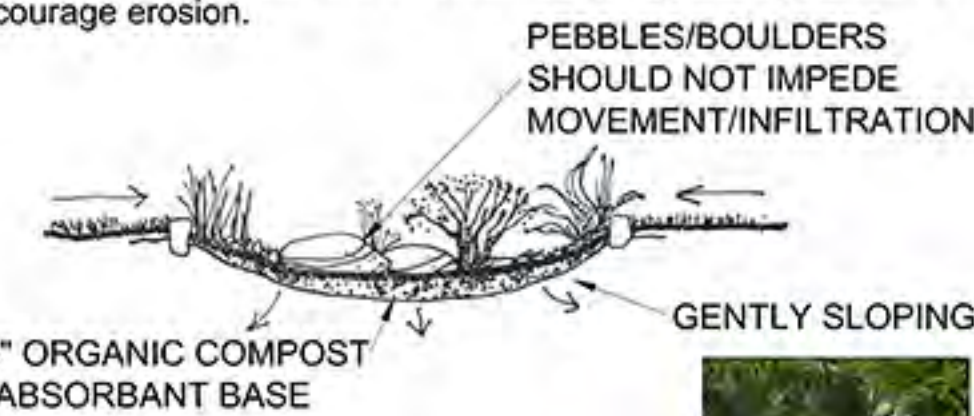
HYDROZONE PLAN



HYDROZONE 1:
INLINE DRIP (IE., NETAFIM)
LAID ON 1' GRID, UNDER
MULCH

HYDROZONE 2:
ROTATING NOZZLES (IE., MP ROTATORS)
FULL COVERAGE, ADJUST FOR
NO OVERSPRAY TO HARDSCAPE

NOTE:
SWALE ON CONCEPTUAL PLAN
Many turf removal programs now require at least one sustainable element to qualify for rebates. This landscape template features a 'swale'. Soil is lightly contoured to infiltrate water falling on site. Width may vary and 6"-8" depth is all that is typically required to infiltrate rainfall. Decorative boulders may also be used for a 'dry creek' style swale. Swales are not required to feature rocks or boulders. Sides should be gently sloping no more than 30 per cent to discourage erosion.



SWALE MAY BE
PLANTED OR AS
'DRY CREEK'
WITH PEBBLES,
BOULDERS



GENERAL NOTES:

This garden is designed with plant groupings typical of a natural setting. Local species as well as native plant varieties from coastal environments have been selected and placed based on climate requirements. Adding permeable hardscape surfaces and contouring the land allows rainwater to replenish the soil without runoff.

As it matures, this garden will become diverse and layered. It will come to life with different plant species, butterflies, hummingbirds and seasonal flowers. The initial establishment period of the garden is 3 months - when watering must be carefully attended to. Your garden will be considered 'mature' in approximately 3 years. Trees take longer to mature and a deep root system should be encouraged by periodic deep watering. After the first year, your garden will require reduced summer watering (deeply, every 3 weeks). It is possible to have a healthy, happy native garden utilizing hand-watering only.

To reduce overspray, runoff and to enhance landscape water conservation use the following guidelines when planting and designing irrigation:

- 1) Inline drip irrigation maybe used in all garden areas less than 6 feet in width.
- 2) For areas over 6 feet adjustable rotating nozzles may be used
- 3) Mediterranean and native plants require the plant crown area to drain. Plant with crowns 1" above grade to discourage water sitting at base of plant and to direct moisture toward outer root zone. Plant to discourage later settling of plants into a depression. Plant crowns must remain slightly above grade after settling.
- 4) Mulch all garden beds with 3" small to medium bark mulch.
- 5) If soil amendment (compost) is used to increase soil organic matter, use no more than 20 per cent compost to native backfill.



PLANTING TECHNIQUE FOR NATIVE AND MEDITERRANEAN PLANTS
(USED WITH PERMISSION: Tree of Life Nursery www.californianativeplants.com)

TREES



CHILOPSIS LINEARIS
DESERT WILLLOW



CHILOPSIS LINEARIS
DETAIL



UMBELLULARIA CALIFORNICA
CALIFORNIA BAY

SHRUBS



ARCTOSTAPHYLOS
DENSIFLORA 'HOWARD MCMINN'
HOWARD MCMINN MANZANITA



HOWARD MCMINN MANZANITA
DETAIL



GALVEZIA SPECIOSA 'FIRECRACKER'
FIRECRACKER ISLAND SNAPDRAGON
MATURE AND FLOWER DETAIL



FLOWERING



PENSTEMON SPECTABILIS
SHOWY PENSTEMON



ACHILLEA MILLEFOLIUM
COMMON YARROW
(OR CULTIVARS)



ACHILLEA CULTVAR 'PAPRIKA'

ACCENTS



SALVIA 'WINIFRED GILMAN'
WINIFRED GILMAN CLEVELAND SAGE



JUNCUS PATENS
CALIFORNIA GREY RUSH



VERBENA LILACINA 'DE LA MINA'
DE LA MINA LILAC VERBENA

GROUNDCOVER



CAREX TUMULICOLA
FOOTHILL SEDGE



SALVIA 'DARA'S CHOICE'
DARA'S CHOICE SAGE
SPRING BLOOM

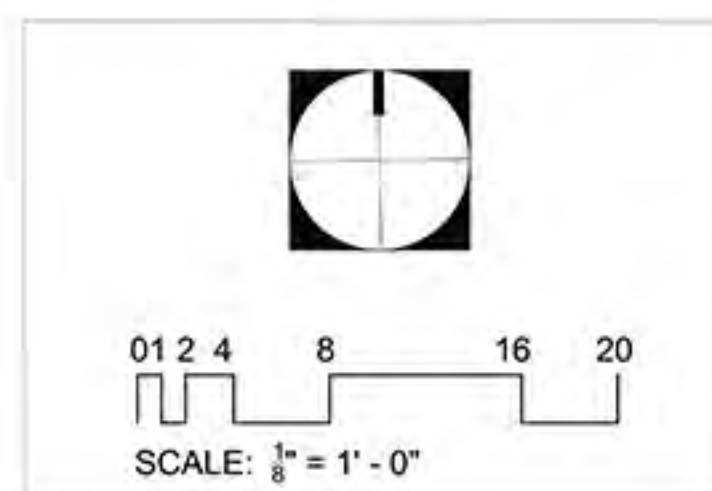


SALVIA 'DARA'S CHOICE'
DARA'S CHOICE SAGE
GROUNDCOVER (NOT IN BLOOM)

NORTHPARK

Mid-Block

California Friendly Planting - Sun



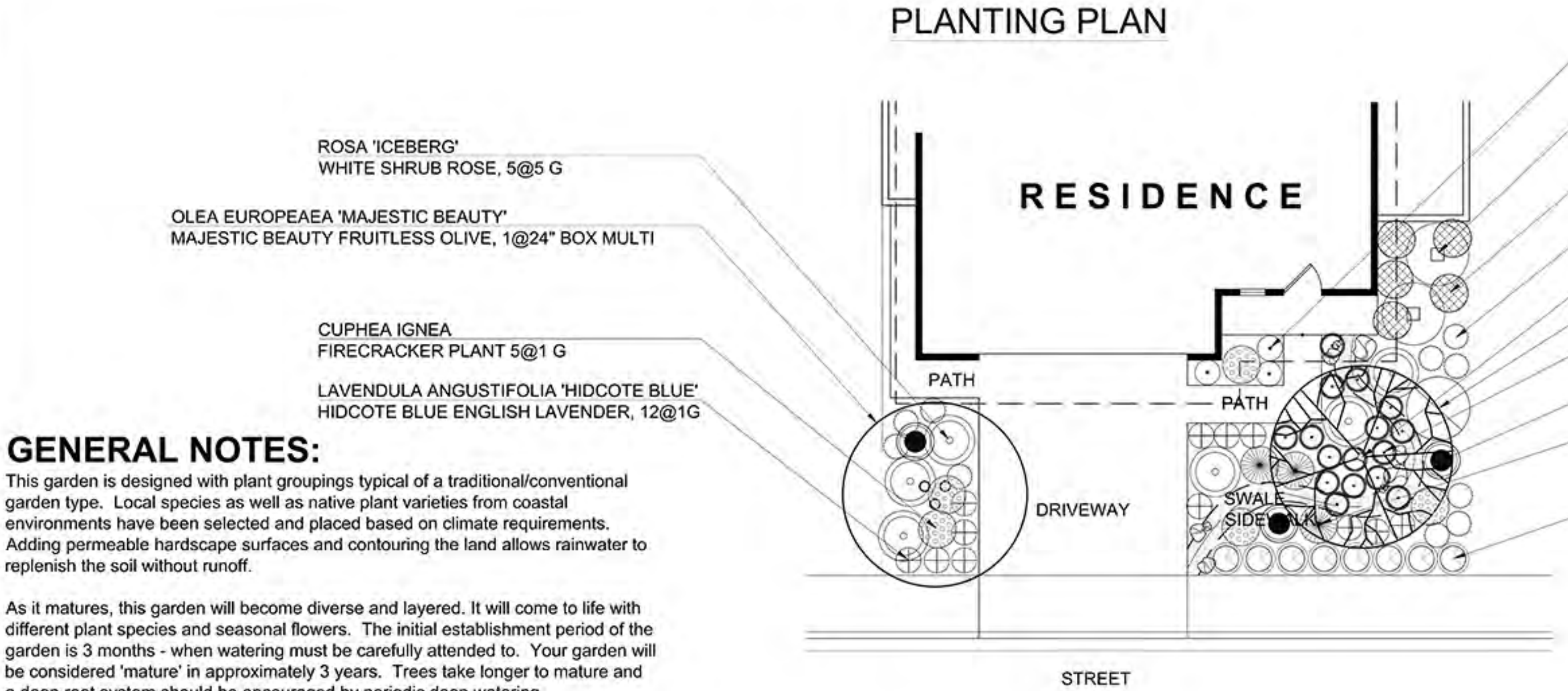
SCALE: 1/8" = 1' - 0"

JODIE COOK
QWEL WWLP ASLA
SITES AP
LANDSCAPE DESIGN
www.jodiecookdesign.com
949-291-8003



SMITH / architects

WUCOLS - NORTH PARK Traditional				
Type(s)	Botanical Name	Common Name	Water Use	ET %
Ground Cover, Perennial	Achillea millefolium (non-native hybrids)	yarrow	Moderate/Medium	40-60
Perennial, California Native	Carex pansa	sand dune sedge	Moderate/Medium	40-60
Perennial, California Native	Calandrinia spp. and cvs.	rock purslane	Low	10-30
Perennial	Verbena bonariensis	verbena	Low	10-30
Ground Cover, Shrub, Vine	Trachelospermum jasminoides	star jasmine	Moderate/Medium	40-60
Perennial	Teucrium x lucidrys	dwarf germander	Low	10-30
Perennial, Shrub	Salvia leucantha and cvs.	Mexican bush sage	Low	10-30
Shrub	Rosa hybrids .bush	rose	Moderate/Medium	40-60
Tree	Arbutus 'Marina'	Marina arbutus	Low	10-30
Tree	Olea europaea	olive	Low	10-30
Ornamental Grass	Muhlenbergia capillaris and cvs.	hairy awn muhly	Moderate/Medium	40-60
Shrub	Lavandula spp. & cvs.	lavender	Low	10-30
Shrub	Dodonaea viscosa	hopseed bush	Low	10-30
Shrub	Cuphea ignea	cigar plant	Moderate/Medium	40-60



GENERAL NOTES:

This garden is designed with plant groupings typical of a traditional/conventional garden type. Local species as well as native plant varieties from coastal environments have been selected and placed based on climate requirements. Adding permeable hardscape surfaces and contouring the land allows rainwater to replenish the soil without runoff.

As it matures, this garden will become diverse and layered. It will come to life with different plant species and seasonal flowers. The initial establishment period of the garden is 3 months - when watering must be carefully attended to. Your garden will be considered 'mature' in approximately 3 years. Trees take longer to mature and a deep root system should be encouraged by periodic deep watering.

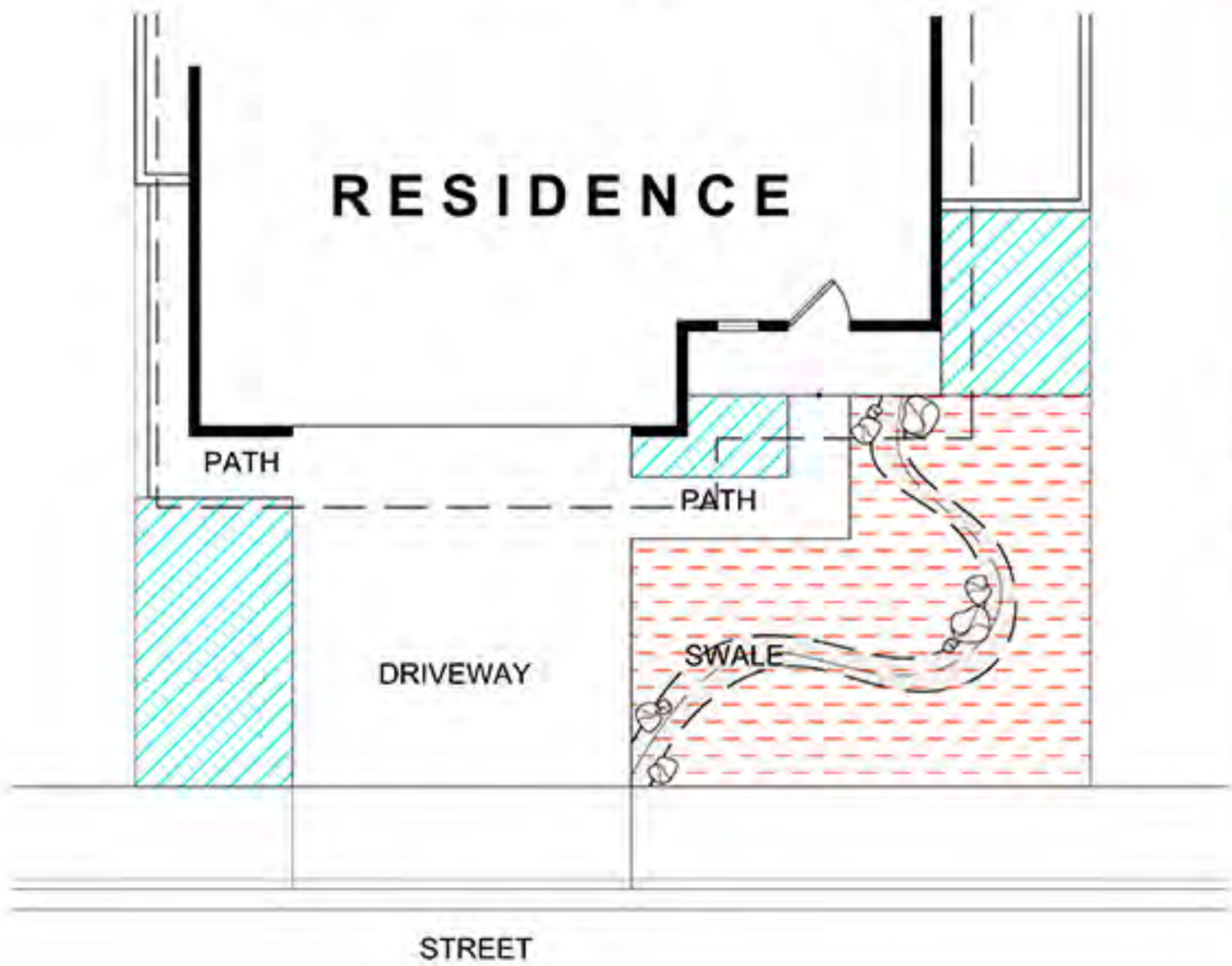
To reduce overspray, runoff and to enhance landscape water conservation use the following guidelines when planting and designing irrigation:

- 1) Inline drip irrigation maybe used in all garden areas less than 6 feet in width.
- 2) For areas over 6 feet adjustable rotating nozzles may be used
- 3) Mediterranean and native plants require the plant crown area to drain. Plant with crowns 1" above grade to discourage water sitting at base of plant and to direct moisture toward outer root zone. Plant to discourage later settling of plants into a depression. Plant crowns must remain slightly above grade after settling.
- 4) Mulch all garden beds with 3" small to medium bark mulch.
- 5) If soil amendment (compost) is used to increase soil organic matter, use no more than 20 per cent compost to native backfill.



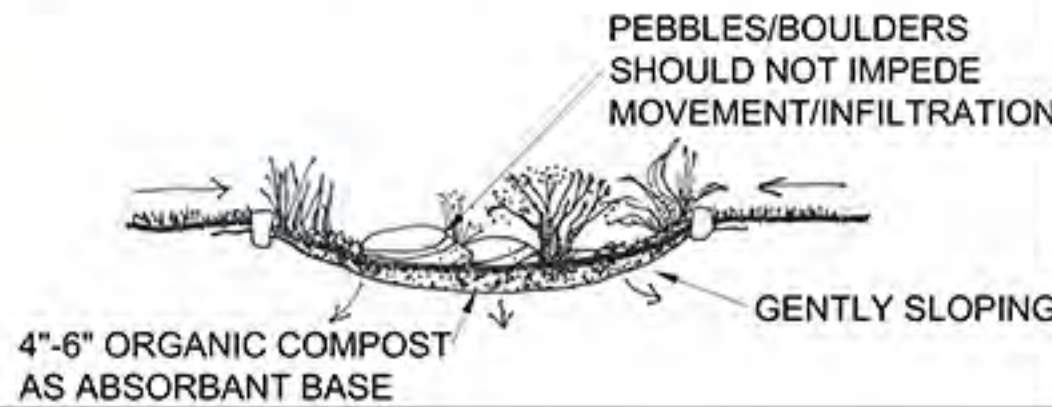
PLANTING TECHNIQUE FOR NATIVE AND MEDITERRANEAN PLANTS
(USED WITH PERMISSION: Tree of Life Nursery www.californianativeplants.com)

HYDROZONE PLAN



- HYDROZONE 1:
INLINE DRIP (IE., NETAFIM)
LAID ON 1' GRID, UNDER
MULCH
- HYDROZONE 2:
ROTATING NOZZLES (IE., MP ROTATORS)
FULL COVERAGE, ADJUST FOR
NO OVERSPRAY TO HARDSCAPE

NOTE:
SWALE ON CONCEPTUAL PLAN Many turf removal programs now require at least one sustainable element to qualify for rebates. This landscape template features a 'swale'. Soil is lightly contoured to infiltrate water falling on site. Width may vary and 6"-8" depth is all that is typically required to infiltrate rainfall. Decorative boulders may also be used for a 'dry creek' style swale. Swales are not required to feature rocks or boulders. Sides should be gently sloping no more than 30 per cent to discourage erosion.



- CALANDRINIA GRANDIFLORA
ROCK PURSLANE, 3@1G
- DODONAEA VISCOSA 'PURPUREA'
PURPLE-LEAFED HOP-BUSH, 2@5G
- TRACHELOSPERMUM JASMINOIDES
STAR JASMINE, 5@1G
- ACHILLEA 'MOONSHINE'
MOONSHINE YARROW, 10@1G
- ARBUTUS 'MARINA'
MARINA STRAWBERRY TREE, 1@24" BOX
- SALVIA LUECANTHA 'MIDNIGHT'
PURPLE MEXICAN SAGE, 1@5G
- CAREX PANSA
CALIFORNIA MEADOW SEDGE, 16@1G
- VERBENA BONARIENSIS
PURPLETOP VERVAIN, 3@1G
- MUHLENBERGIA CAPILLARIS 'REGAL MIST'
PINK MUHLY, 3@1G
- TEUCRIUM X LUCIDRYS
WALL GERMANDER, 8@1G

TREES



OLEA EUROPAEA 'MAJESTIC BEAUTY'
MAJESTIC BEAUTY FRUITLESS OLIVE



ARBUTUS 'MARINA'
MARINA STRAWBERRY TREE



ARBUTUS MARINA DETAIL

SHRUBS/GROUNDCOVERS



DODONAEA VISCOSA 'PURPUREA'
PURPLE-LEAFED HOP-BUSH



CUPHEA IGNEA
CIGAR PLANT



TEUCRIUM X LUCIDRYS
WALL GERMANDER (AS EDGE)

FLOWERING



LAVANDULA ANGUSTIFOLIA 'HIDCOTE'
HIDCOTE BLUE ENGLISH LAVENDER



ACHILLEA 'MOONSHINE'
MOONSHINE YARROW

ACCENTS



MUHLENBERGIA CAPILLARIS
'REGAL MIST'
PINK MUHLY



SALVIA LUECANTHA 'MIDNIGHT'
PURPLE MEXICAN SAGE



ROSA 'ICEBERG'
WHITE SHRUB ROSE



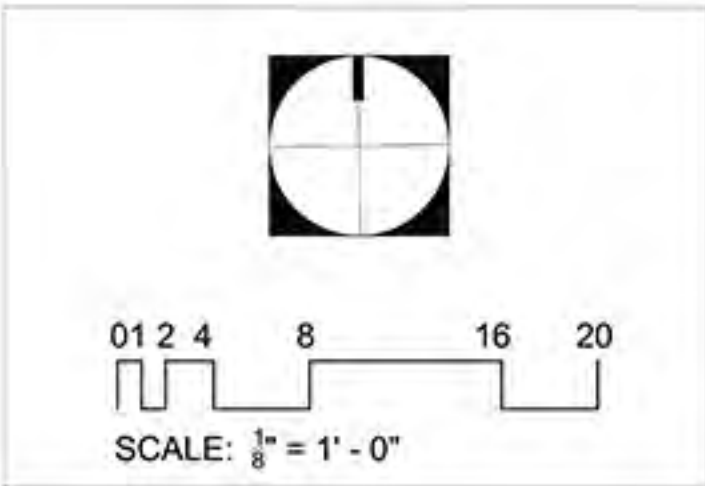
VERBENA
BONARIENSIS

SUCCULENTS



CALANDRINIA GRANDIFLORA
ROCK PURSLANE

NORTH PARK
Mid-Block
Traditional Planting - Sun



JODIE COOK
QWEL WWLP ASLA
SITES AP
LANDSCAPE DESIGN
www.jodiecookdesign.com
949-291-8003



SMITH / architects